

Bearing Roller Chain

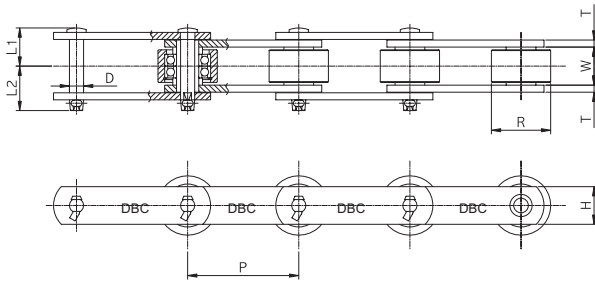
This chain contains ball bearings inside the rollers.

Low rotating frictional force of the roller allows minimal operational loss and high allowable load compared to other rollers.

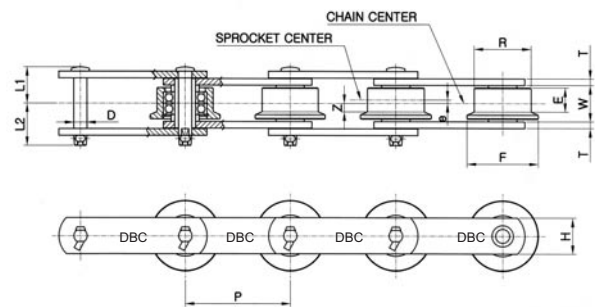
- Dimensions of the assembled chain and attachments are identical to general conveyor chains.
- General conveyor chain sprockets are used.
- Coefficient of rotating friction $f : 0.035\sim 0.05$

Ball bearing chain

Type-BR



Type-BF



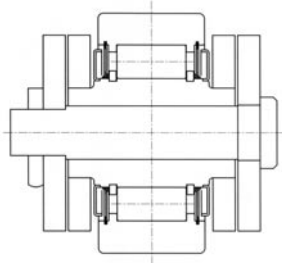
unit:mm

DONG BO Chain No.		Pitch	Roller Diameter	F-Roller Dimensions					Inner Width	Plate		Pin			max. Allowable Load of Roller (kg/each)		Avg. Breaking Load(kgf)		Weight				
Basic Chain	Type of Roller			P	R	R	F	E		e	Z	T	H	D	L1	L2	R-Roller	F-Roller	Standard Series	Heavy Series	R-Roller	F-Roller	
DBC 05100	BR·BF	100	40	40	50	14	2.5	4.5	22	4.5	32	11.1	24.6	29.6	310	200	3,000	7,100	5.0	5.2			
	05150	BR·BF																			150	4.4	4.2
DBC 08150	BR·BF	150	44.5	44.5	55	20	3	7	27	6.3	28.6	11.1	30.7	35.7	420	270	8,000	11,500	5.5	5.8			
DBC 10100	BR·BF	100	50.8	50.8	65	20	3	7	30	6.3	38.1	14.3	32.7	39.2	560(790)	350	11,500	23,000	9.8	10.3			
	10125	BR·BF																			125	8.7	8.9
	10150	BR·BF																			150	7.9	8.1
DBC 6205	BR·BF	152.4	57.2	57.2	70	25	3.5	9	37.1	7.9	44.5	15.9	40	46.5	850(1,200)	560	19,000	28,500	12.1	12.4			
DBC 12200	BR·BF	200	65	65	80	24	4	8	37.1	7.9	44.5	15.9	40	46.5	850(1,200)	560	19,000	28,500	11.4	11.9			
	12250	BR·BF																			250	10.3	10.6
DBC 212	BR·BF	152.4	69.9	69.9	85	25	4	8.5	37.1	9.5	50.8	19.05	44.2	52.7	1,440(2,000)	1000	25,000	39,500	17.1	18			
DBC 17200	BR·BF	200	80	80	100	34	5	12	51.4	9.5	50.8	19.05	51.5	60	1,440(2,000)	1000	25,000	39,500	18.8	19.8			
	17250	BR·BF																			250	16.5	17.3
	17300	BR·BF																			300	15.0	15.7
DBC 26200	BR·BF	200	100	100	125	38	6	13	57.2	9.5	63.5	22.2	55.2	62.7	2,000(2,800)	1400	32,000	53,000	29	31			
	26250	BR·BF																			250	25.3	26.2
	26300	BR·BF																			300	22.3	23.6
	26450	BR·BF																			450	18.0	18.9
DBC 36250	BR·BF	250	125	125	150	49	8	16.5	77	12.7	90	35	77	84	2,800(3,900)	1900	48,500	69,500	42.7	45.8			
	36300	BR·BF																			300	39.0	40.1
	36450	BR·BF																			450	30.7	31.9

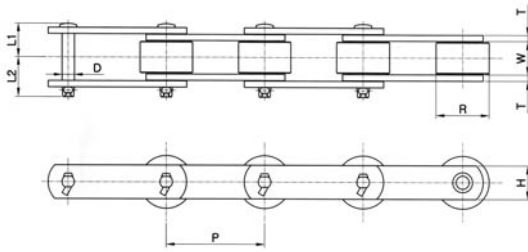
Note) Numbers within () are used when two bearings are contained in one roller.

Bearing Roller Chain

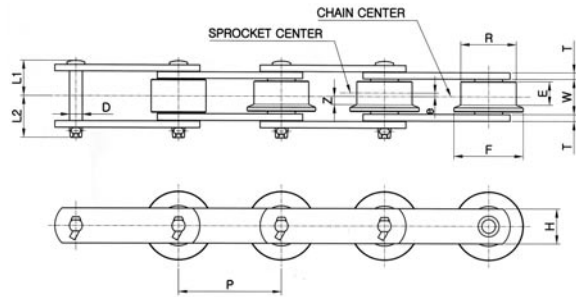
Needle bearing chain



Section of Roller 로울러의 단면



Type-NBR



Type-NBF

unit:mm

DONG BO Chain No.		Pitch	Roller Dia meter			F-Roller Dimensions					Inner Width	Plate		Pin		max. Allowable Load of Roller (kg/each)		Avg. Breaking Load(kgf)		Weight		
Basic Chain	Type of Roller		P	R	E	R	F	E	e	Z		T	H	D	L1	L2	R-Roller	F-Roller	Standard Series	Heavy Series	R-Roller	F-Roller
DBC 03075	NBR-NBF	75	31.8	15.5		31.8	42	12	1.8	4.3	16.1	3.2	22	7.9	17.5	19.5	200	130	3.000	7.100	2.7	2.8
DBC03100	NBR-NBF	100																			2.3	2.4
DBC05100	NBR-NBF	100	40	19		40	50	14	2.5	4.5	22	4.5	32	11.1	24.6	29.6	310	200	7.000	14.500	5.0	5.2
DBC05150	NBR-NBF	150																			4.1	4.2
DBC450	NBR-NBF	101.6	44.5	23		44.5	55	20	3	7	27	6.3	28.6	11.1	30.7	35.7	420	270	8.000	14.500	6.8	7.2
DBC08150	NBR-NBF	150	44.5	23		44.5	55	20	3	7	27	6.3	28.6	11.1	30.7	35.7	420	270	8.000	14.500	5.5	5.6
DBC10100	NBR-NBF	100																			9.8	10.3
DBC10125	NBR-NBF	125	50.8	27		50.8	65	20	3	7	30	6.3	31.8	14.3	32.7	39.2	560	350	11.500	23.000	8.7	8.9
DBC10150	NBR-NBF	150																			7.9	8.1
DBC6205	NBR-NBF	152.4	57.2	32		57.2	70	25	3.5	9	37.1	7.9	44.5	15.9	40	46.5	850	560	19.000	28.500	12.1	12.4
DBC12200	NBR-NBF	200																			11.4	11.9
DBC12250	NBR-NBF	250	65	32		65	80	24	4	8	37.1	7.9	44.5	15.9	40	46.5	850	560	19.000	28.500	10.3	10.6
DBC212	NBR-NBF	152.4	69.9	32.5		69.9	85	25	4	8.5	37.1	9.5	50.8	19.05	44.2	52.7	1.440	1.000	25.000	39.500	17.1	18
DBC17200	NBR-NBF	200																			18.8	19.8
DBC17250	NBR-NBF	250	80	44		80	100	34	5	12	51.4	9.5	50.8	19.05	51.5	60	1.440	1.000	25.000	39.500	16.5	17.3
DBC17300	NBR-NBF	300																			15.0	15.7
DBC26200	NBR-NBF	200																			29.0	31.0
DBC26250	NBR-NBF	250																			25.3	26.2
DBC26300	NBR-NBF	300	100	50		100	125	38	6	13	57.2	9.5	63.5	22.2	55.2	62.7	2.000	1.400	32.000	53.000	22.2	23.6
DBC26450	NBR-NBF	450																			18.0	18.9
DBC36300	NBR-NBF	300																			42.7	45.8
DBC36450	NBR-NBF	450	125	56		125	150	49	8	16.5	77	12.7	90	35	77	84	2.800	1.900	48.500	69.500	39.0	40.1
DBC36600	NBR-NBF	600																			30.7	31.9