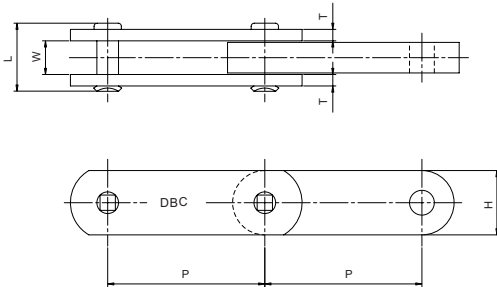




DONGBO CHAIN

## Block Chain



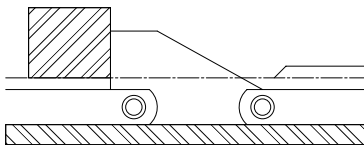
unit : mm

DONG BO CHAIN NO.	pitch P	Avg. Breaking Load (kgf)	Approx. Weight (kg/m)	Inner width W	Pin L	Plate	
						H	T
DF30150	150	31,500	7.0	23.3	50	38.1	7.9
DF30200	200		6.6				
DF40150	150	40,500	9.0	26.5	52	44.5	7.9
DF40200	200		8.5				
DF56200	200	56,500	12.3	29.5	60	54	9.5
DF56250	250		12.0				
DF63200	200	63,000	13.7	31.5	62	57	9.5
DF63250	250		13.0				
DF70200	200	73,500	16.2	33.5	64	63.5	9.5
DF70250	250		15.5				
DF90200	200	92,500	21.0	38	70	72	10.5
DF90250	250		20.0				
DF115250	250	114,000	25.0	40	78	76.2	12.7
DF115300	300		24.0				
DF140250	250	143,000	32.0	47.5	88	85	14
DF140300	300		31.0				
DF180300	300	177,500	39.0	52.5	98	95	16
DF180350	350		37.8				
DF210300	300	219,500	50.0	59	104	110	16
DF210350	350		48.5				
DF250300	300	248,500	58.8	66	118	112	19
DF250350	350		56.7				
DF280300	300	277,500	66.0	67	118	122	19
DF280350	350		62.3				

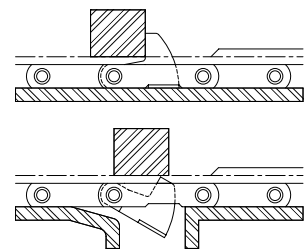
DBC

### Application of Dog

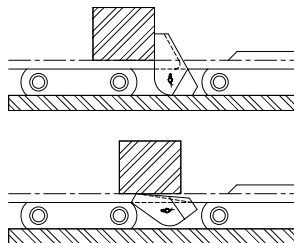
#### Fixed Dog



#### Ducking Dog



#### Tilting



#### Tilting & Ducking Dog

