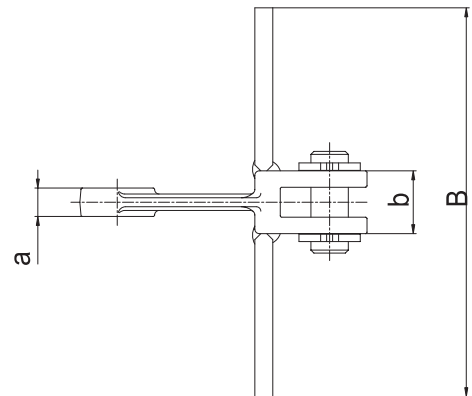
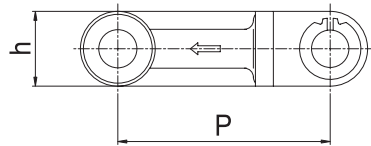


## Case Conveyor Chain

The case conveyor rotates a chain inside a casing with square sections.

The chain has the most logical shape according to the type of the conveyor and the characteristics of conveyed items. There are T and U-types and special UA, UB and UC-types. This chain maintains sufficient strength through our unique heat processing technique, is light, has high density, and is adequate for harsh conditions.



### Forging type

unit : mm

DONG BO CHAIN No.	Pitch P	Dimensions of Link				Dimensions of Att. * B	Avg. Breaking Load (kgf)	max.Allowable Load (kgf)	Weight of Chain (kg/m)
		a	b	h	t				
<b>DBC F05125</b>	120	10	21	26	6	125	5,000	830	3.30
<b>DBC F05150</b>	120	10	21	26	6	150	5,000	830	3.33
<b>DBC F05190</b>	120	10	21	26	6	190	5,000	830	3.40
<b>DBC F309</b>	142	19	42	50	11	270	30,000	3.340	
<b>DBC F40</b>	142	25	56	50	17	450	43,000	5.100	
<b>DBC F363</b>	142	29	62	50	16	480	48,000	6.600	
<b>DBC F10125</b>	150	15	32	34	8	125	10,000	1.670	4.60
<b>DBC F10150</b>	150	15	32	34	8	150	10,000	1.670	4.86
<b>DBC F10190</b>	150	15	32	34	8	190	10,000	1.670	6.05
<b>DBC F10240</b>	150	15	32	34	8	240	10,000	1.670	8.80
<b>DBC F10290</b>	150	15	32	34	8	290	10,000	1.670	8.85
<b>DBC F10340</b>	150	15	32	34	8	340	10,000	1.670	9.84
<b>DBC F15290</b>	150	18	37	40	10	290	20,000	2.500	11.63
<b>DBC F20340</b>	150	20	41	46	11	340	30,000	3.340	15.9
<b>DBC F20410</b>	150	20	41	46	11	410	30,000	3.340	21.2
<b>DBC F30410</b>	200	20	41	46	12	410	40,000	5.000	17.3
<b>DBC F30480</b>	200	20	41	46	12	480	40,000	5.000	19.1
<b>DBC F40480</b>	200	22	45	52	12	480	48,000	6.600	22.4
<b>DBC F40570</b>	200	22	45	52	12	570	48,000	6.600	25.2
<b>DBC F50570</b>	200	26	54	54	14	570	58,000	8.300	27.5

\* Att = Attachment