

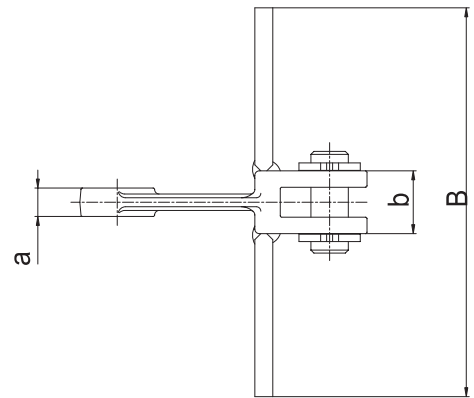
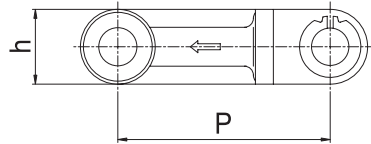
## Case Conveyor Chain

### 케이스 컨베이어용 체인

The case conveyor rotates a chain inside a casing with square sections.

The chain has the most logical shape according to the type of the conveyor and the characteristics of conveyed items. There are T and U-types and special UA, UB and UC-types. This chain maintains sufficient strength through our unique heat processing technique, is light, has high density, and is adequate for harsh conditions.

레도라식 컨베이어로 칭하는 케이스 컨베이어에 전용되는 체인입니다. 컨베이어형식, 운반물의 성질 등에 따라 가장 합리적인 형상을 하고 있고 T형, U형 및 특수형인 UA형, UB형, UC형 등의 종류가 있으며 당사의 특수한 열처리기술로 충분한 강도를 유지하며 가볍고, 정밀도가 높은 체인으로, 길이가 길고 가혹한 조건에 최적의 체인입니다.



### Forging type 단조형

unit : mm

DONG BO CHAIN No.	Pitch P	Dimensions of Link				Dimensions of Att. * B	Avg. Breaking Load (kgf)	max.Allowable Load (kgf)	Weight of Chain (kg/m)
		a	b	h	t				
<b>DBC F05125</b>	120	10	21	26	6	125	5,000	830	3.30
<b>DBC F05150</b>	120	10	21	26	6	150	5,000	830	3.33
<b>DBC F05190</b>	120	10	21	26	6	190	5,000	830	3.40
<b>DBC F309</b>	142	19	42	50	11	270	30,000	3.340	
<b>DBC F40</b>	142	25	56	50	17	450	43,000	5.100	
<b>DBC F363</b>	142	29	62	50	16	480	48,000	6.600	
<b>DBC F10125</b>	150	15	32	34	8	125	10,000	1.670	4.60
<b>DBC F10150</b>	150	15	32	34	8	150	10,000	1.670	4.86
<b>DBC F10190</b>	150	15	32	34	8	190	10,000	1.670	6.05
<b>DBC F10240</b>	150	15	32	34	8	240	10,000	1.670	8.80
<b>DBC F10290</b>	150	15	32	34	8	290	10,000	1.670	8.85
<b>DBC F10340</b>	150	15	32	34	8	340	10,000	1.670	9.84
<b>DBC F15290</b>	150	18	37	40	10	290	20,000	2.500	11.63
<b>DBC F20340</b>	150	20	41	46	11	340	30,000	3.340	15.9
<b>DBC F20410</b>	150	20	41	46	11	410	30,000	3.340	21.2
<b>DBC F30410</b>	200	20	41	46	12	410	40,000	5.000	17.3
<b>DBC F30480</b>	200	20	41	46	12	480	40,000	5.000	19.1
<b>DBC F40480</b>	200	22	45	52	12	480	48,000	6.600	22.4
<b>DBC F40570</b>	200	22	45	52	12	570	48,000	6.600	25.2
<b>DBC F50570</b>	200	26	54	54	14	570	58,000	8.300	27.5

\* Att = Attachment