

Deep link Chain

딥 링크 체인



The Deep Link Chain has R rollers attached to the general conveyor chain, thereby having a higher plate. Items to be conveyed are placed directly on top of the plate.

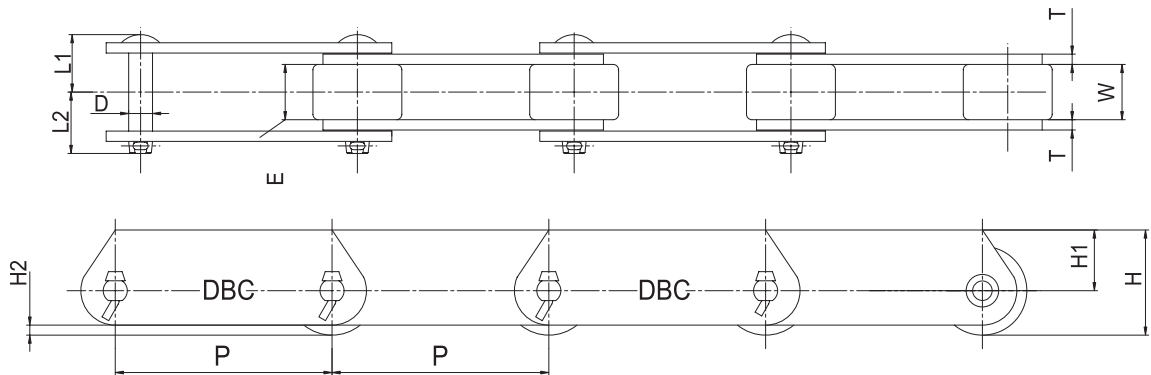
<Application>

1. Conveyance of hot rolled steel plate and section steel in steel mills
2. Automobile or container assembly lines

딥 링크(Deep link) 체인은 R롤러를 부착한 일반 컨베이어 체인의 플레이트를 높게 하여 플레이트 상면에 직접 운반물을 적재하는 체인입니다.

<용도>

1. 제철소의 후판 형강 등의 반송
2. 자동차, 컨테이너의 조립라인 등



unit : mm

DONG BO CHAIN No.	Pitch P	Roller		Inner Width W	height of Chain H	Plate			Pin			max.Allowable load of roller (kgf / each)		Avg.breaking Load(kgf)		Approx. Weight (kg/m)	
		R	몰림폭 E			Height H ₁	Thickness T	D	L ₁	L ₂	Standard Series	Heavy Series	Standard Series	Heavy Series			
															H ₂		
DBC D03075R	75																3.2
DBC D03100R	100	31.8	15.5	16.1	36.9	21	4.9	3.2	7.9	18	20	55	90	3.000	7.100		2.8
DBC D05100R	100																5.9
DBC D05150R	150	40	19	22	44	24	4	4.5	11.1	25	28.5	105	175	7.000	14.500		4.9
DBC D08150R	150	44.5	23	27	50.3	28	8	6.3	11.1	31	34.5	130	215	8.000	14.500		7.0
DBC D10150R	150																9.7
DBC D10200R	200	50.8	27	30	57.4	32	6.4	6.3	14.3	33	36	180	300	11.500	23.000		8.5
DBC D6205R	152.4	57.2	32	37.1	63.5	35	6	7.9	15.9	40.5	43	255	425	19.000	28.500		14.0
DBC D12200R	200																14.9
DBC D12250R	250	65	32	37.1	73.5	41	10	7.9	15.9	40.5	43	255	425	19.000	28.500		13.5
DBC D17250R	250																22.5
DBC D17300R	300	80	44	51.4	90	50	13.8	9.5	19.05	51.5	58	410	680	25.000	39.500		21.5
DBC D26300R	300	85	50	57.2	95.5	53	10.5	9.5	22.2	55.5	61	540	900	32.000	53.000		24.3
DBC D36300R	300																39.0
DBC D36400R	400	100	56	66.7	112	62	12	12.7	25.4	68	78	760	1.260	48.500	69.500		34.2
DBC D52450R	450	110	56	77	125	70	17	16	31.8	82	90	1.000	1.690	51.000	105.000		46.0