

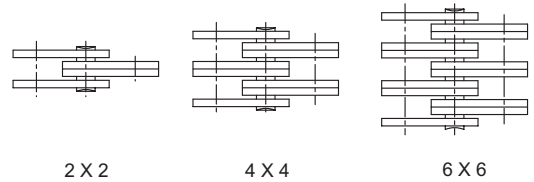
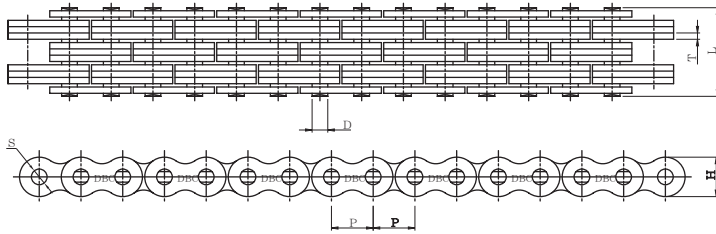
Leaf chain

리프체인

Type-A Leaf Chain(Standard series) : A타입 리프체인 (표준형)

Plate exterior, thickness and pin external diameter are identical to those of ANSI Standard roller chains with same pitch.

플레이트의 외형 및 두께, 핀의 외경은 동일피치의 표준형로울러 체인과 같습니다.



unit : mm

DONG BO CHAIN NO.	배열 Lacing	Pitch P	Pin		Plate			Breaking load(Kgf)		Approx Weight Kg/m
			D	L	T	H	S	D.S	A.N.S.I	
DBC AL-422	2×2	12.70	3.97	8.40	1.5	10.4	4.02	1,700	1,500	0.38
DBC AL-444	4×4	12.70	3.97	14.85	1.5	10.4	4.02	3,400	3,000	0.74
DBC AL-466	6×6	12.70	3.97	21.30	1.5	10.4	4.02	5,100	4,500	1.10
DBC AL-522	2×2	15.875	5.08	10.85	2.0	13.0	5.13	2,800	2,500	0.62
DBC AL-544	4×4	15.875	5.08	19.35	2.0	13.0	5.13	5,600	5,000	1.22
DBC AL-566	6×6	15.875	5.08	27.80	2.0	13.0	5.13	8,400	7,600	1.81
DBC AL-622	2×2	19.05	5.94	12.65	2.4	15.6	6.00	3,900	3,400	0.87
DBC AL-644	4×4	19.05	5.94	22.55	2.4	15.6	6.00	7,800	6,900	1.71
DBC AL-666	6×6	19.05	5.94	32.45	2.4	15.6	6.00	11,700	10,000	2.54
DBC AL-822	2×2	25.40	7.90	16.35	3.2	20.8	7.97	6,600	6,000	1.51
DBC AL-844	4×4	25.40	7.90	29.80	3.2	20.8	7.97	13,200	12,000	2.98
DBC AL-866	6×6	25.40	7.90	43.20	3.2	20.8	7.97	19,800	17,900	4.44
DBC AL-1022	2×2	31.75	9.48	20.05	4.0	26.0	9.57	10,000	8,700	2.69
DBC AL-1044	4×4	31.75	9.48	36.70	4.0	26.0	9.57	20,000	17,500	5.31
DBC AL-1066	6×6	31.75	9.48	53.30	4.0	26.0	9.57	30,000	26,300	7.93
DBC AL-1222	2×2	38.10	11.04	24.20	4.8	31.2	11.14	14,000	12,400	3.57
DBC AL-1244	4×4	38.10	11.04	44.00	4.8	31.2	11.14	28,800	24,900	7.07
DBC AL-1266	6×6	38.10	11.04	63.85	4.8	31.2	11.14	43,200	37,400	10.56
DBC AL-1444	4×4	44.45	12.64	51.30	5.6	36.4	12.74	38,000	31,400	10.34
DBC AL-1466	6×6	44.45	12.64	74.55	5.6	36.4	12.74	57,000	47,200	15.16
DBC AL-1644	4×4	50.80	14.21	58.05	6.4	41.6	14.32	48,000	39,700	12.98
DBC AL-1666	6×6	50.80	14.21	84.45	6.4	41.6	14.32	72,000	59,600	19.41

주) A · B 타입 리프체인의 플레이트 배열 및 치수는 주문에 따라 변경 제작 가능합니다.

note) Plate layouts and dimensions of A, B type Leaf Chains can be custom-made according to order.



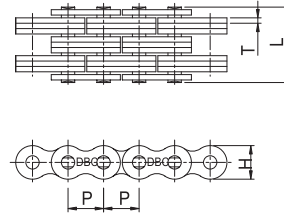
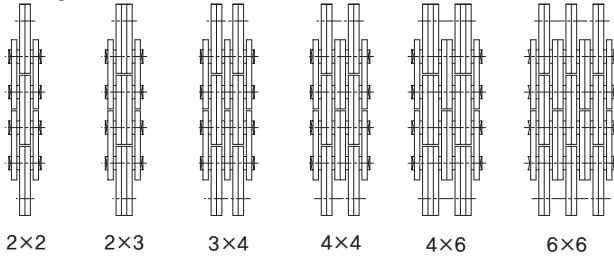
Leaf chain

리프체인

Type-B Leaf Chain (Heavy series) : B타입 리프체인 (강력형)

The plate exterior is identical to that of the ANSI Standard Roller Chain, but the plate thickness and the pin external diameter are identical to those of the Roller Chain one size higher.

플레이트의 외형은 표준형 로울러 체인과 동일하나 플레이트의 두께 및 핀외경은 1사이즈 높은 피치의 로울러 체인의 것과 동일합니다.



unit : mm

DONG BO CHAIN NO.	배열 Lacing	Pitch P	Pin		T	Plate			Breaking Load(Kgf)		Approx Weight Kg/m
			D	L		H	S	DBC	A.N.S.I		
DBC BL-422	2x2	12.70	5.08	10.85	2.0	12.0	5.13	2,400	2,300	0.68	
DBC BL-423	2x3	12.70	5.08	12.95	2.0	12.0	5.13	2,400	2,300	0.84	
DBC BL-434	3x4	12.70	5.08	17.20	2.0	12.0	5.13	3,600	3,400	1.13	
DBC BL-444	4x4	12.70	5.08	19.41	2.0	12.0	5.13	4,800	4,500	1.28	
DBC BL-446	4x6	12.70	5.08	23.60	2.0	12.0	5.13	4,800	4,500	1.65	
DBC BL-466	6x6	12.70	5.08	27.80	2.0	12.0	5.13	7,100	6,800	1.96	
DBC BL-522	2x2	15.875	5.94	12.65	2.4	15.0	6.00	4,000	3,400	1.07	
DBC BL-523	2x3	15.875	5.94	15.10	2.4	15.0	6.00	4,000	3,400	1.27	
DBC BL-534	3x4	15.875	5.94	20.10	2.4	15.0	6.00	6,000	5,000	1.69	
DBC BL-544	4x4	15.875	5.94	22.56	2.4	15.0	6.00	8,000	6,800	1.89	
DBC BL-546	4x6	15.875	5.94	27.50	2.4	15.0	6.00	8,000	6,800	2.40	
DBC BL-566	6x6	15.875	5.94	32.45	2.4	15.0	6.00	12,000	10,200	2.80	
DBC BL-622	2x2	19.05	7.90	16.38	3.2	18.1	7.97	6,500	5,000	1.68	
DBC BL-623	2x3	19.05	7.90	19.75	3.2	18.1	7.97	6,500	5,000	2.04	
DBC BL-634	3x4	19.05	7.90	26.45	3.2	18.1	7.97	9,750	7,700	2.83	
DBC BL-644	4x4	19.05	7.90	29.80	3.2	18.1	7.97	13,000	10,000	3.18	
DBC BL-646	4x6	19.05	7.90	36.50	3.2	18.1	7.97	13,000	10,000	4.01	
DBC BL-666	6x6	19.05	7.90	43.20	3.2	18.1	7.97	19,500	15,000	4.73	
DBC BL-822	2x2	25.40	9.48	20.17	4.0	24.1	9.57	10,500	8,600	2.59	
DBC BL-823	2x3	25.40	9.48	24.20	4.0	24.1	9.57	10,500	8,600	3.20	
DBC BL-834	3x4	25.40	9.48	32.55	4.0	24.1	9.57	15,800	13,200	4.44	
DBC BL-844	4x4	25.40	9.48	36.90	4.0	24.1	9.57	19,400	17,300	5.04	
DBC BL-846	4x6	25.40	9.48	45.00	4.0	24.1	9.57	19,400	17,300	6.32	
DBC BL-866	6x6	25.40	9.48	53.30	4.0	24.1	9.57	29,200	25,900	7.54	
DBC BL-1022	2x2	31.75	11.04	23.98	4.8	30.1	11.14	14,400	11,800	3.76	
DBC BL-1023	2x3	31.75	11.04	28.90	4.8	30.1	11.14	14,400	11,800	4.69	
DBC BL-1034	3x4	31.75	11.04	38.85	4.8	30.1	11.14	22,000	18,600	6.55	
DBC BL-1044	4x4	31.75	11.04	43.39	4.8	30.1	11.14	28,000	23,600	7.48	
DBC BL-1046	4x6	31.75	11.04	53.70	4.8	30.1	11.14	28,800	23,600	9.29	
DBC BL-1066	6x6	31.75	11.04	63.85	4.8	30.1	11.14	43,200	35,500	11.16	
DBC BL-1222	2x2	38.10	12.64	28.04	5.6	36.2	12.74	19,000	15,500	4.83	
DBC BL-1223	2x3	38.10	12.64	33.90	5.6	36.2	12.74	19,000	15,500	6.54	
DBC BL-1234	3x4	38.10	12.64	45.50	5.6	36.2	12.74	30,500	25,000	9.10	
DBC BL-1244	4x4	38.10	12.64	51.30	5.6	36.2	12.74	38,000	30,900	10.39	
DBC BL-1246	4x6	38.10	12.64	62.95	5.6	36.2	12.74	38,000	30,900	12.01	
DBC BL-1266	6x6	38.10	12.64	74.57	5.6	36.2	12.74	57,000	46,400	14.58	
DBC BL-1422	2x2	44.45	14.21	31.62	6.4	42.2	14.32	24,000	19,500	7.31	
DBC BL-1423	2x3	44.45	14.21	38.20	6.4	42.2	14.32	24,000	19,500	9.06	
DBC BL-1434	3x4	44.45	14.21	51.40	6.4	42.2	14.32	39,500	32,300	11.32	
DBC BL-1444	4x4	44.45	14.21	58.05	6.4	42.2	14.32	48,000	39,100	12.96	
DBC BL-1446	4x6	44.45	14.21	71.25	6.4	42.2	14.32	48,000	39,100	18.00	
DBC BL-1466	6x6	44.45	14.21	84.46	6.4	42.2	14.32	72,000	59,100	22.51	
DBC BL-1622	2x2	50.80	17.38	35.59	7.2	48.2	17.49	36,000	29,500	9.84	
DBC BL-1623	2x3	50.80	17.38	43.25	7.2	48.2	17.49	36,000	29,500	12.16	
DBC BL-1634	3x4	50.80	17.38	58.40	7.2	48.2	17.49	56,500	45,000	16.95	
DBC BL-1644	4x4	50.80	17.38	65.86	7.2	48.2	17.49	72,000	59,100	18.97	
DBC BL-1646	4x6	50.80	17.38	81.05	7.2	48.2	17.49	72,000	59,100	24.09	
DBC BL-1666	6x6	50.80	17.38	96.15	7.2	48.2	17.49	108,100	88,600	28.73	
DBC BL-2022	2x2	63.50	23.73	47.94	9.5	60.3	23.84	54,000	44,300	14.43	
DBC BL-2023	2x3	63.50	23.73	57.90	9.5	60.3	23.84	54,100	44,300	17.95	
DBC BL-2034	3x4	63.50	23.73	77.82	9.5	60.3	23.84	81,100	66,400	24.95	
DBC BL-2044	4x4	63.50	23.73	87.78	9.5	60.3	23.84	108,200	88,600	28.45	
DBC BL-2046	4x6	63.50	23.73	107.70	9.5	60.3	23.84	108,200	88,600	35.44	
DBC BL-2066	6x6	63.50	23.73	127.62	9.5	60.3	23.84	162,300	133,000	42.01	