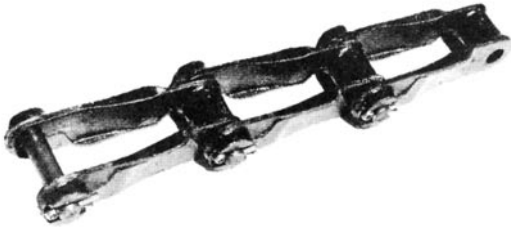


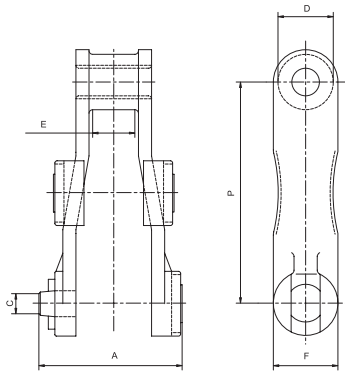
Chain for water Industry / Sewage Treatment

수처리 장치용 체인

700 Class Pintle chain : 700 클래스 핀틀 체인



The 700-class Pintle Chain can withstand corrosion and rust, thereby making it possible for usages in salt water and under polluted waters. It is a conveyor chain for environment purposes such as collectors at sewage treatment facilities. Its long and strong pitches, along with wide bottom surface are designed to withstand abrasion and corrosion. In addition, in order to attach large scrapers or buckets, strong attachments are provided. The 710 series chains are adequate for Batcher Plants on the ground for conveying sand, gravel with capabilities to withstand harsh abrasion.



700클래스 핀틀 체인은 부식이나 녹에 강하고 해수나 기타 오염된 수중에서 사용할 수 있는 것이 특징입니다. 오수처리 침전지의 컬렉터 등 악조건용 컨베이어 체인으로서는 특히 내마모성과 내부식성에 적합하도록 설계된 것으로서, 피치가 길고 강력하며 저면을 넓게 해서 마모에 견딜 수 있는 구조로 되어 있습니다. 또한 대형의 스크레이퍼(Scraper)나 버킷(Bucket)을 부착하기 위하여 어태치먼트도 강인하게 되어 있습니다. 710시리즈는 육상에서의 배처플랜트(Batcher Plant)에 적합한 체인이며 과격한 마모에서 견딜 수 있는 성능을 가지고 있습니다.

unit : mm

DONG BO CHAIN No.	Pitch		Dimensions					Avg. Breaking Load(kgf)	max. allowable Load(kgf)	Weight (kg/m)
	mm	in	A	C	D	E	F			
DBC 710	119.6	4.71	143	17.5	28.6	60	35	12,500	1,900	9.4
DBC 720	152.4	6.00	90	17.5	35	27	38	12,500	1,610	7.4
DBC 720S	152.4	6.00	98	19.1	36.5	27	40	17,000	1,840	7.8
DBC 730	152.4	6.00	97	19.1	38.1	27	45	19,000	1,950	9

Available Attachment : 어태치먼트 일람표

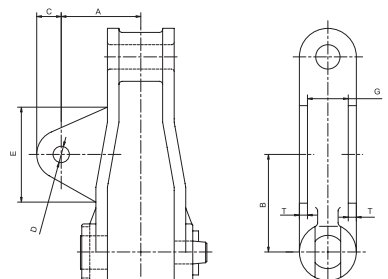
CHAIN No.	A-21	A-42	A-53	AD-474	AM-116	F-2	F-3(SF-4)	F-226	F-228	K-2	M-1
DBC 710										○	
DBC 720				○		○	○	○	○		○
DBC 720S	○		○	○	○	○	○	○	○		○
DBC 730		○	○		○	○	○	○	○	○	○

* ○ = available

A-53 Attachment

DONG BO Basic Chain No.	Dimensions							Approx Weight (kg/m)
	A	B	C	D	E	G	T	
DBC 720S	62	76	19.1	12.7	76	24	6.3	7.74
DBC 730	49	76	19.1	12.7	76	28	6.3	9.38

unit : mm



A-53 Attachment

Chain for water Industry / Sewage Treatment

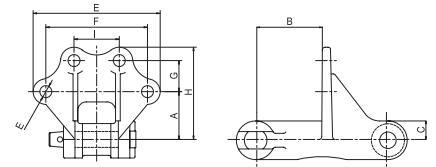
700 Class pintle chain : 700 클래스 핀들 체인



F-2 Attachment

unit : mm

DONG BO		Dimensions									Weight (kg/m)
Basic Chain No.		A	B	C	D	E	F	G	H	I	
	720	50.8	76	19.1	12.7	135	54	33	98	33	9.7
DBC	720S	50.8	76	19.8	12.7	135	54	33	98	33	11.5
	730	50.8	76	22.2	12.7	135	54	33	98	33	12.9

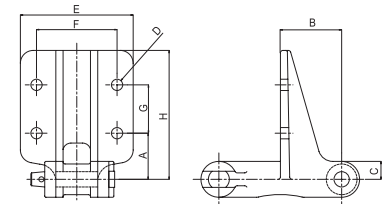


F-2

F-3 Attachment

unit : mm

DONG BO		Dimensions								Weight (kg/m)
Basic Chain No.		A	B	C	D	E	F	G	H	
	720	60	76	19.1	12.7	138	100	60	140	15.7
DBC	720S	60	76	19.8	12.7	125	95	64	139	16
	730	60	76	22.2	12.7	130	95	64	152	20



F-3, F-226, F-228

F-226 Attachment

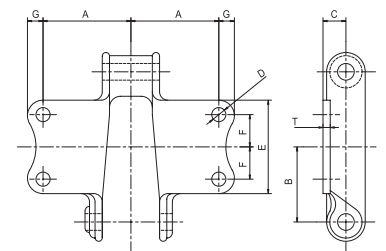
unit : mm

DONG BO		Dimensions								Weight (kg/m)
Basic Chain No.		A	B	C	D	E	F	G	H	
	720	60	76	19.1	12.7	130	95	67	152	16.7
DBC	720S	60	76	19.8	12.7	130	95	67	152	17.1
	730	60	76	22.2	12.7	130	95	67	152	20.5

F-228 Attachment

unit : mm

DONG BO		Dimensions								Weight (kg/m)
Basic Chain No.		A	B	C	D	E	F	G	H	
	720	60	76	19.1	12.7	127	95	114	197	19.4
DBC	720S	60	76	19.8	12.7	127	95	114	203	20.1
	730	60	76	22.2	12.7	127	95	114	203	23.1



K-2

K-2 Attachment

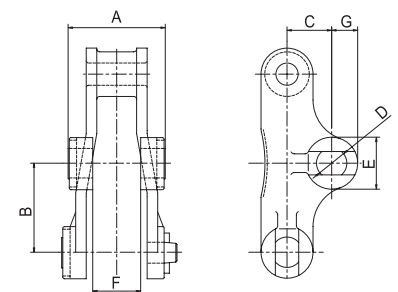
unit : mm

DONG BO		Dimensions								Weight (kg/m)
Basic Chain No.		A	B	C	D	E	F	G	H	
	710	79	60	20.6	19.1	84	29	14	6.3	12.1
DBC	730	76	76	25.4	12.7	102	33	18	7.9	12.8

M-1 Attachment

unit : mm

DONG BO		Dimensions							Weight (kg/m)
Basic Chain No.		A	B	C	D	E	F	G	
	720	76	76	38.1	19.1	38.1	38.1	19.1	9
DBC	720S	76	76	38.1	19.1	38.1	38.1	19.1	10
	730	76	76	41.3	19.1	38.1	38.1	19.1	11.6

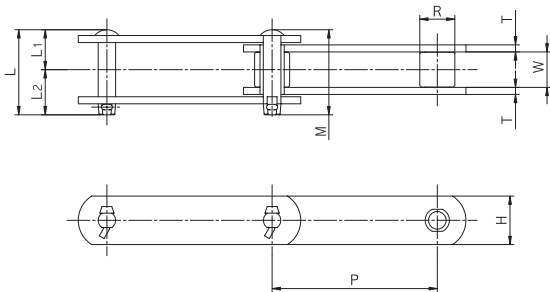
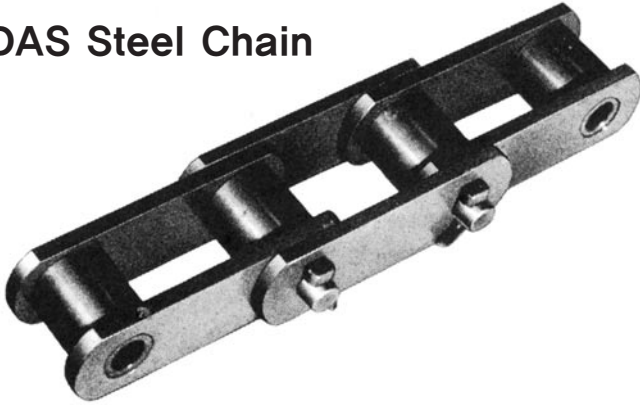


M-1

Chain for water Industry / Sewage Treatment

수처리 장치용 체인

DAS Steel Chain



This chain is designed specially for water treatment facilities.

Unlike standard type chains, they are manufactured with special alloy steel to sustain strength and withstand from corrosion and abrasion.

The pin and bush for the DAS chain used in automatic dust remover are manufactured with 400-class stainless steel to increase its ability to withstand from corrosion and abrasion.

수처리장치용으로 특별히 설계된 체인입니다.

일반표준형 체인과는 달리 강도 및 내부식·내마모성을 개선하기 위하여 특수합금강으로 제조합니다.

자동제진기에 사용하는 DAS체인의 핀과 부쉬는 내부식·내마모성을 한층 더 증진시키기 위하여 400클래스 스테인레스강을 사용합니다.

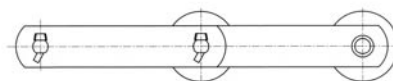
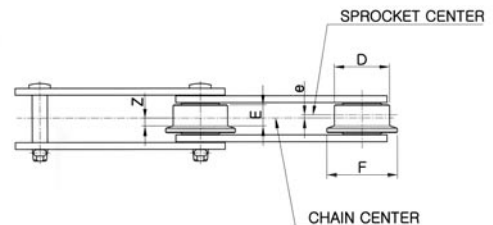
unit : mm

DONG BO CHAIN NO.		Pitch P	Roller R			Inner Width W	Plate		Pin				Avg. Breaking Load(kgf)	guaranted Breaking Load(kgf)	Weight of Roller(kg/m)			
Standard Designation	Chain No.		S-R/O	F-R/O	R-R/O		T	H	D	L ₁	L ₂	L			S-R/O	R-R/O	F-R/O	
DBC	DAS 15215	S-FR	152.4	25.4	50.8	50.8	30.2	6.3	38.1	11.05	31.0	38.0	69.0	15,000	13,500	6.0	7.8	8.0
	DAS 15219	S-FR	152.4	29.0	50.8	50.8	30.2	6.3	38.1	14.18	32.8	40.5	73.3	19,000	17,100	6.6	7.8	8.0
	DAS 15228	S-FR	152.4	34.9	65.0	65.0	37.1	7.9	44.5	15.80	40.0	47.5	87.5	28,000	25,500	9.3	12.0	13.0
	DAS 15235	S-FR	152.4	39.7	70.0	70.0	37.1	9.5	50.8	18.94	44.5	53.0	97.5	38,000	35,000	12.6	17.1	18.1
	DAS 15248	S	152.4	44.5	-	-	57.2	9.5	63.5	22.11	55.3	64.3	119.6	52,000	47,000	17.8	-	-

* R/O=Roller

unit : mm

DONG BO BasicChain No.	D	F	e	Z	E
DBC DAS 15215	50.8	65	3	7	20
DBC DAS 15219	50.8	65	3	7	20
DBC DAS 15228	65.0	85	4	8	24
DBC DAS 15235	70.0	85	3.5	9	25



어태치먼트 일람표 Available Attachment

Basic Chain No.	D-22	T-1	A-2
DAS 15215		○	○
DAS 15219	○	○	○
DBC DAS 15228	○	○	○
DAS 15235	○	○	○
DAS 15248		○	

Chain for water Industry / Sewage Treatment

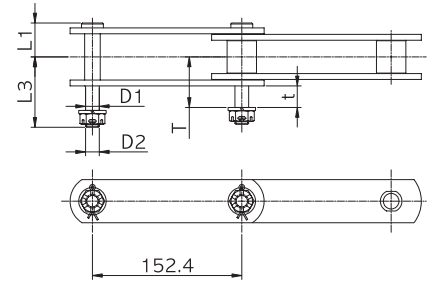
수처리 장치용 체인

DAS Steel Chain

D-22 Attachment

unit : mm

DONG BO		Dimensions						Weight (kg/each)
BasicChain No.		L ₁	L ₃	D ₁	D ₂	l	t	
	DAS 15219	32.8	59.0	13.5	M12	44.3	16	0.12
DBC	DAS 15228	40.0	68.0	15.5	M14	51.1	16	0.13
	DAS 15235	44.5	74.0	18.0	M16	54.4	16	0.19

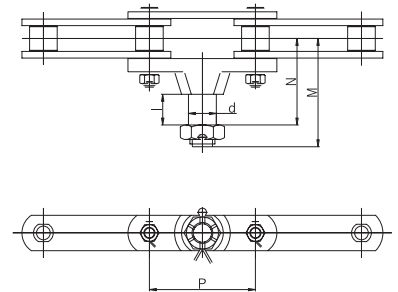


D-22 Attachment

T-1 Attachment

unit : mm

DONG BO		Pitch P	Dimension				Weight (kg/each)
BasicChain No.			M	N	d	ℓ	
	DAS 15215	152.4	108	80	25	30	1.2
	DAS 15219	152.4	108	85	30	35	1.4
DBC	DAS 15228	152.4	149	122	40	44	2.8
	DAS 15235	152.4	151	124	40	44	3.4
	DAS 15248	152.4	184	145	50	50	5.1

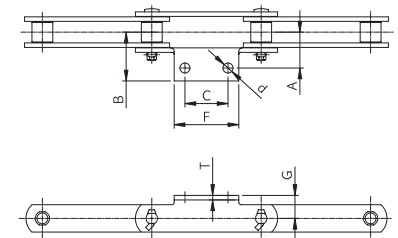


T-1 Attachment

A-2 Attachment

unit : mm

DONG BO		Pitch P	Dimension						Weight (kg/each)	
BasicChain No.			A	B	C	F	G	d		T
	DAS 15215	152.4	50	66	60	90	32	14	6.3	0.25
DBC	DAS 15219	152.4	50	66	60	90	32	14	6.3	0.25
	DAS 15228	152.4	60	81	60	100	38	18	7.9	0.40
	DAS 15235	152.4	65	86	60	100	45	18	9.5	0.55

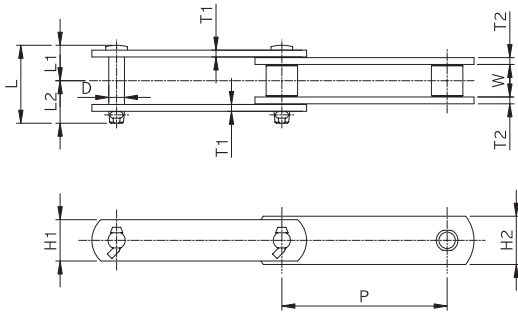
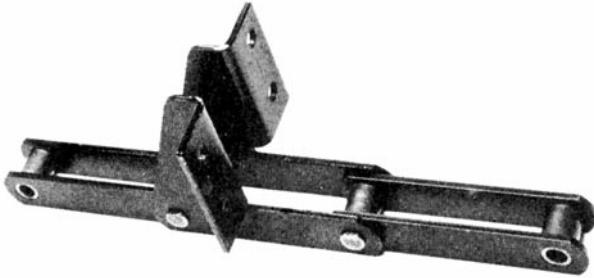


A-2 Attachment

Chain for water Industry / Sewage Treatment

수처리 장치용 체인

DSSStainless Steel Chain



각 부품의 재질은 모두 엄선된 스테인레스강재로 정밀프레스 가공하여 제조합니다.

정밀도가 높고 특히 경량으로 설계된 것이나 충분한 파단강도를 유지하고 있고 특유의 내식성을 발휘함은 물론 내마모성이 탁월합니다.

슬러지컬렉터(Sludge Collector)용의 플라이트(Flight)에는 SF-4 어태치먼트, 그리트컬렉터(Grit Collector)용의 버킷 엘리베이터(Bucket Elevator)에는 D-22 어태치먼트, 더스트 컬렉터(Dust Collector)용의 레이크(Rake)에는 A-2 어태치먼트를 각각 취부합니다.

All components are manufactured with carefully selected stainless steel through the precision press procedure.

This chain is designed with high precision and has light weight. It maintains sufficient ultimate tensile strength and has excellent capabilities to withstand from corrosion and abrasion.

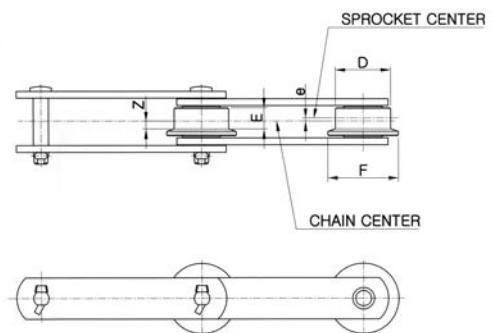
SF-4 attachments are placed on Sludge Collector Flights, D-22 attachments on Grit Collector Bucket Elevators, and A-2 attachments on Dust Collector Rakes.

unit : mm

DONG BO CHAIN NO.			Pitch P	Roller Dimensions R			Inner Width W	Pin Link Plate		Bushing Link Plate		pin				Avg. Breaking load (kgf)	Guarnted Breaking load (kgf)	Weight of roller (kgf)		
Standard Designation	Chain No.	Roller Type		Bushed Type	S-Roller Type	F-Roller Type		T ₁	H ₁	T ₂	H ₂	D	L ₁	L ₂	L			Bushed Type	S-Roller Type	F-Roller Type
DBC	DSS 15215	B-S-F	152.4	24	29	48	26	5	36	6	38	13.5	29	33	62	15,000	13,500	4.2	4.6	7.3
	DSS 15219	B-S-F	152.4	26	32	50	30	6	38	6	44	14.5	32	40	72	19,000	17,500	5.8	6.7	8.5
	DSS 15225	B-S-F	152.4	30	36	58	34	6	44	7	54	15.3	36	44	80	25,000	23,000	6.9	7.7	11.5
	DSS 15235	B-S-F	152.4	36	32	70	38	7	54	7	60	18.9	40	48	88	35,000	32,000	10.3	11.7	16.4

unit : mm

DONG BO BasicChain No.		D	F	e	Z	E
DBC	DSS 15215	48	60	2.25	5.75	16
	DSS 15219	50	65	3.00	7.00	20
	DSS 15228	58	75	3.00	9.00	24
	DSS 15235	70	90	4.00	8.50	25



어태치먼트 일람표 Available Attachment

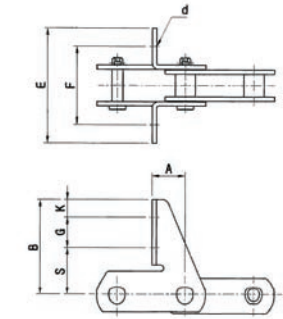
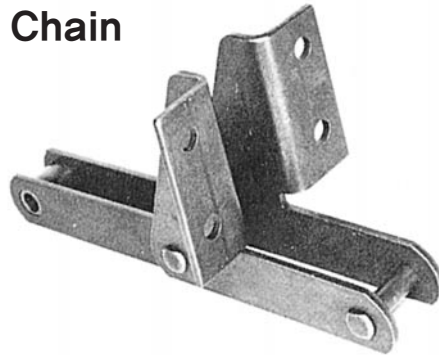
Basic Chain No.	SF-4	A-2	D-22	
DBC	DSS 15215	○	○	○
	DSS 15219	○	○	○
	DSS 15225	○	○	○
	DSS 15235	○	○	○

Chain for water Industry / Sewage Treatment

수처리 장치용 체인

DSSStainless Steel Chain

SF-4 Attachment

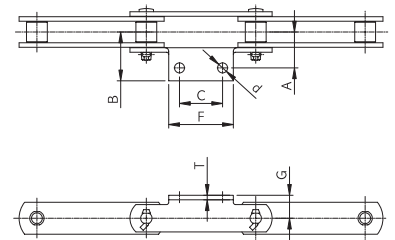
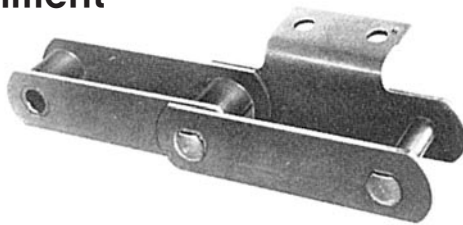


SF-4 Attachment

unit : mm

DONG BO		Dimensions										add.weight per Attachment (kg/each)
BasicChain No.		A	B	C	E	F	G	K	S	T	d	
DBC	DSS 15215	76	140	38	140	100	60	20	22	5	14	1.0
	DSS 15219	76	157.5	40	140	100	75	20	22.5	6	14	1.3
	DSS 15219	76	142.5	40	150	112	60	20	22.5	6	14	1.4
	DSS 15219	76	155	32	140	100	65	20	38.0	6	14	1.45
	DSS 15225	76	162	40	140	100	75	20	27	6	18	1.6
	DSS 15235	76	175	40	150	110	76	25	35	7	18	1.9

A-2 Attachment

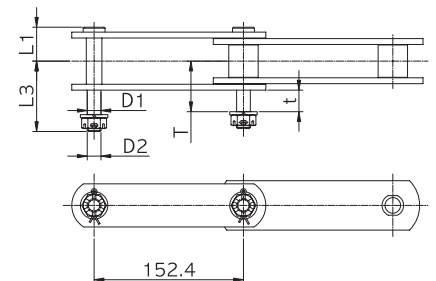
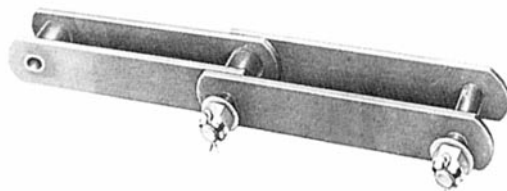


A-2 Attachment

unit : mm

DONG BO		Dimensions							add.weight per Attachment (kg/each)
BasicChain No.		A	B	C	F	G	d	T	
DBC	DSS 15215	45	60	60	90	30	14	5	0.16
	DSS 15219	50	65	60	90	32	14	6	0.21
	DSS 15225	55	75	60	100	35	18	6	0.27
	DSS 15235	65	90	60	100	42	18	7	0.39

D-22 Attachment



D-22 Attachment

unit : mm

DONG BO		Dimensions						add.weight per Attachment (kg/each)
BasicChain No.		L ₁	L ₃	D ₁	D ₂	l	t	
DBC	DSS 15215	29	51	13	M12	37	12	0.11
	DSS 15219	32	58	14	M12	44	16	0.12
	DSS 15225	36	64	15	M14	47	16	0.13
	DSS 15235	40	72	18	M16	53	19	0.19