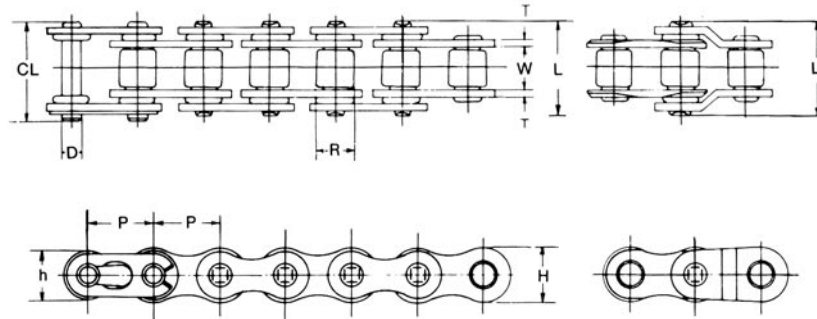




O - Ring Chain



The O-ring Chain is used in a wide range of industrial applications, such as chemical plants, construction sites, packing machinery, textile machinery, paper mills and car parking system.
 Dong Bo provide two types of O-Ring Chains(circular - and X-Ring). Special alternatives available on request.
 (for working in high temperature)



unit : mm

DONG BO CHAIN NO.	pitch P	Inner Width W	Roller Dia R	Pin			Plate			Brealaing Load kgf/min.	Appox. weight kg/m
				D	L	CL(max)	T	H	h		
DBC 40 OL	12.70	7.95	7.94	3.97	20.0	20.0	1.5	12.0	10.4	1,850	0.67
DBC 50 OL	15.875	9.53	10.16	5.09	23.4	23.7	2.0	15.0	13.0	3,070	1.08
DBC 60 OL	19.05	12.70	11.91	5.96	28.8	29.8	2.4	18.1	15.6	4,370	1.62
DBC 80 OL	25.40	15.88	15.88	7.94	36.6	38.9	3.2	24.1	20.8	7,400	2.83