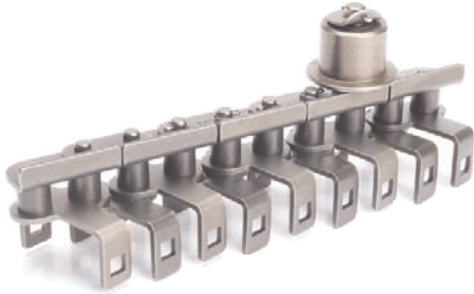
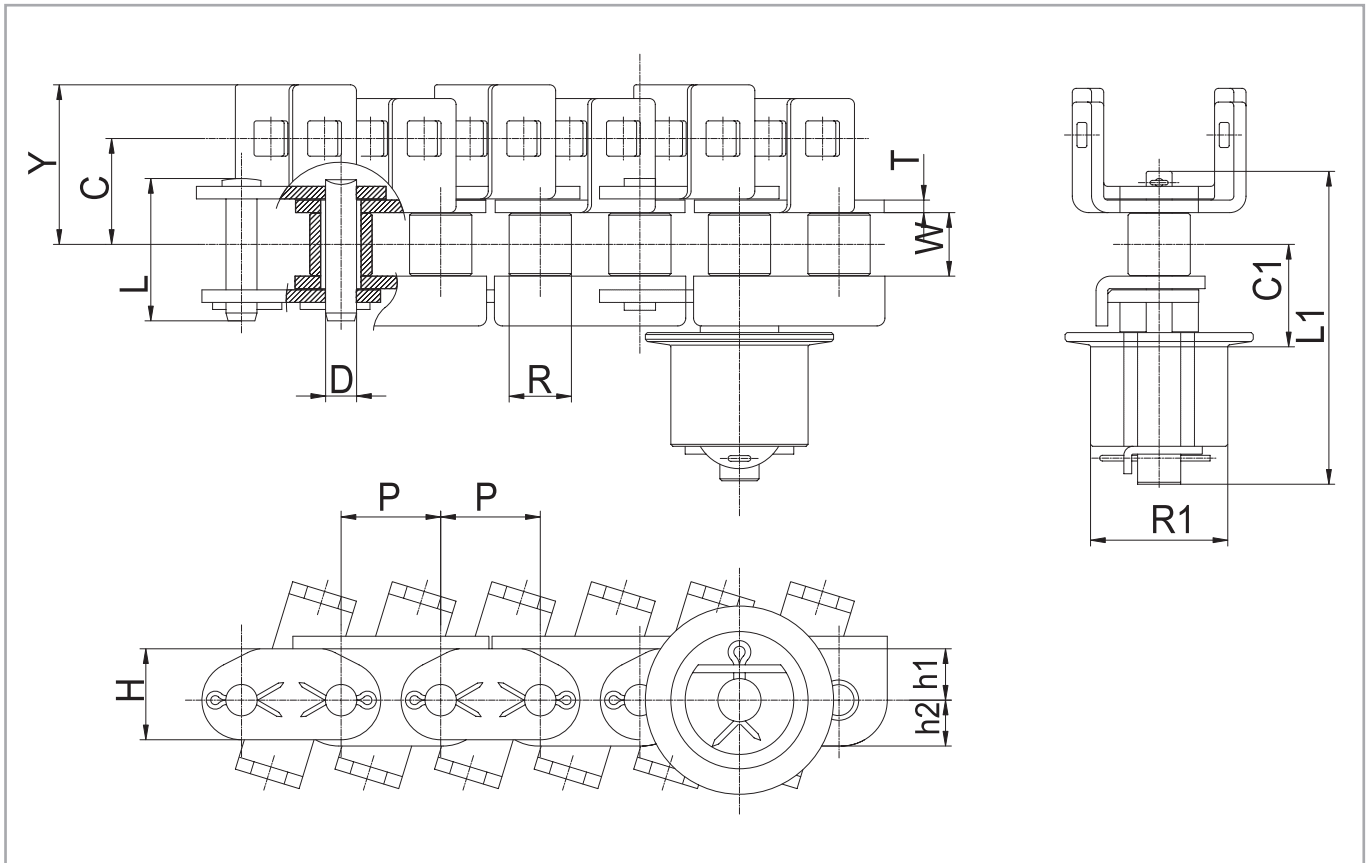




Wicket Chain



Dong Bo Wicket Chain is a no back bend type chain that is used for effective conveyance of printed thin steel plates. As a part of steel can manufacturing, it is attached in two parallel rows to the drying duct for the continuous drying process of printed thin steel plates. One of its characteristics is that special carbon bush is used for side rollers.



unit : mm

DONG BO CHAIN NO.	Pitch P	Roller Dia R	Side Roller Dia R	Inner Width W	Plate				Attachment			Pin		
					T	H	h1	h2	C	C1	Y	D	L	L1
DBCWK 80	25.4	15.88	35.0	15.88	3.2	23.3	13.1	11.7	27.0	25.7	40.7	7.94	35.8	79.8